

CITY ACADEMY

WEEKLY NEWSLETTER OCTOBER 10, 2007



Last week Midterm reports were sent home with students. You can also access grade information via the online Student Information System. If you haven't already done so, please sign and return a slip to your student's advisor indicating whether or not you would like to continue receiving hard copies of grades or whether you would like to simply view the updated information online.

Substitute Teachers Needed

City Academy has a very small pool of substitute teachers, mostly parents and part-time teachers. We need more subs! This is a paid position, at your convenience, usually with last-minute (early morning) notice.

Requirements:

- *Be willing to lead classes of 7th through 12th graders with enthusiasm (the teacher leaves you a plan or materials)
- *You must be fingerprinted and pass background check (substitute pays fee for background check...approximately \$50)
- *You should have at least a high school diploma or GED

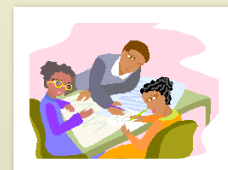
If you would be willing to join our Substitute Teacher pool, please email Sara Moses, Office Manager at: sara@cityacademyslc.org or call 596-8489.

Utah Education Network Teacher Web Pages

Attention parents and students: Several teachers keep updated UEN pages with information about assignments and classroom activi-

ties that can be accessed online. Simply go to the City Academy website and click on Great Teachers and then Staff. You will find a link to teacher emails, bios, and UEN pages. Visit our

website anytime at cityacademyslc.org.



IMPORTANT DATES

OCT. 11
Rhythms of Life
performance during
CA Town Meeting

OCT. 16&18
UBSCT make-up
testing as
needed-8:10.
Regular schedule
for all others.

OCT. 17
PSAT and NMSQT
testing -8:10. Late
start at 10:00 a.m.
for others.



CITY ACADEMY WISH LIST

Thanks to all the parents who donated items from the Wish List last week! Your generosity means so much to our school. City Academy is still in need of the following new or used items. Please take a look at this "wish list" and donate an item or two if you can!

Front Desk-Sara

Kleenex, feminine supplies, scissors, basic school supplies, AA Batteries, AAA Batteries

Foods-Shea

Mixing bowls, 8 cookie sheets, 4 blenders, pots, skillets, knife sharpening services

Educational Support Services (includes Special Ed.)-Deanna

120-minute blank cassette tapes

Grease Bus-Shea

Mechanical help with the grease bus, several 5-gal. buckets with lids and handles to hold liquid for biodiesel production

Computer lab-Bruce

see Bruce for specifics

Green School Committee

Potting soil, seeds, empty spray bottles

PE-Scott

Sturdy stand-alone shelving (Gorilla Racks or similar), frisbees, jump ropes, Real bowling pins (many bowling alleys sell used ones for 50 cents to \$1), equipment bags, footballs, soccer balls, basketballs, fitness equipment

General

Wall mounting pencil sharpeners for outside each classroom, clingy whiteboard sheets

Music-Deanna

Guitar tuners, guitar strings (nylon and steel)

Student Store-Jodie and Shea

Rice cooker, food processor, blender, small white board, rolling cart, plastic drawer organizers

Art-Wade

Art books, paints, brushes, charcoal, pencils, drawing paper, easels, erasers

ATV NEEDED

City Academy is in need of an ATV for the purposes of removing snow from our parking lot in the winter. Also needed would be the actual snow plow attachment. Please call Tom, City Academy's Building Manager, at 801-502-8556.

PEST PRESS – Issue #4 Vol I

- * Are they dangerous? They cannot directly harm humans, but can spread many diseases.
- * What diseases do they carry? They can carry over 100 pathogens, including tuberculosis, typhoid, cholera, anthrax, parasitic worms, ophthalmia, salmonella, and bacterial dysentery.
- * Do they damage property? They do not cause property damage.

Potential Research

- **Nutrient cycling**
Do organic farms versus non-organic farms affect the fly's population?

Common Name: Black Widow Spider

Scientific Name: Latrodectus Mactans

By – Michael Tonel

Habitat: _Most commonly found in unbothered places like old boxes, under leaves, in wood piles, and just about any dark abandoned place

Where have I found these insects?

I have found a female inside a wall in a basement. I found a female outside under a barbeque cover and another in a garage. _

Time of year they are most common

They most commonly come in contact with humans during the winter. The cold drives them to find a warmer shelter.

3 ways to control these insect populations without pesticides

- *Finding and Destroying the web will cause significant damage to the Black Widow.
- *A great way of reducing and controlling populations is sanitation. You can reduce the areas they will be attracted to for the building of a web.

Link to the article I text coded:

<http://ohioline.osu.edu/hyg-fact/2000/2061A.html>

<http://www.ext.vt.edu/departments/entomology/factsheets/blackwid.html>

FAQs (Frequently Asked Questions)

- * **Q: Can a Black Widow bite kill an average human?** A: On average a Black Widow spider but will only cause swelling and intense pain. It will very rarely cause death.
- * **Q: If bit what should I do?** A: Put a pack of ice on the bite to relieve swelling and contact a poison control center or see a doctor.
- * **Q: How can I identify a Black Widow?** A: A female Black Widow Spider is usually a shiny black with what looks like a red hour glass on her abdomen. The Males are harmless and are usually brown with red spots on their abdomens.

Potential Research

- **Plant and animal populations**
The Black Widow is believed to have the most poisonous venom in the United States but it injects so little when it bites that death in humans is rare. Why does the spider inject such a low amount of venom compared to other venomous ones like the Hobo Spider?